



DataSheet – OSIS Onsite Data Viewer

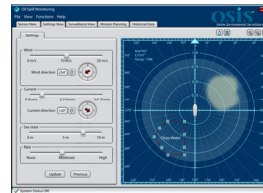
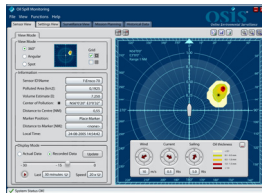
OSIS Onsite Data Viewer - turning data into information

The **OSIS Onsite Data Viewer** analyses and presents the data from SensorPacks and provides users with a real-time interface to oil spill information. The Onsite Viewer can be used as a manual system or as a 24 hour automatic surveillance system set to trigger an alarm if oil is measured on the sea surface. The Onsite Viewer enables advanced report and statistical functionality.

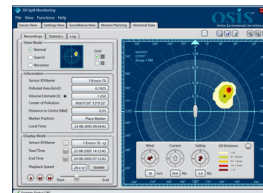
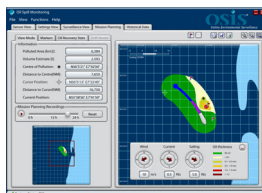
Architecture

The system is divided into two modules. *Module 1* contains the basic functionality for real-time monitoring and quantification of oil spills. *Module 2* contains functionality designed especially for clean-up operations.

Module 1



Module 2



Features

- 24 hour oil spill monitoring and quantification
- Information for self monitoring and control
- Oil spill tracking range: 2.5NM
- Oil spill quantification range: 0.5NM
- Oil spill thickness indication: 0.1 - 1.5mm
- Data from multiple SensorPacks
- Statistics and Log functionality
- Reports for documentation
- Encrypted Data Transmission
- Validation Key securing data reliability

Hardware

- Intel Pentium 4 3.0Ghz 2MB L2 cache 800Mhz FSB
- Intel 945 G chipset
- 2GB of DDR2 RAM Kingston Value RAM
- ATI Radeon X300 graphic card 128MB RAM
- Hitachi TravelStart E5100 40GB disk
- Optical drive
- 20" TFT Screen, 1600 x 1200 pixels
- HP Procurve 1312 100Mbit 8 ports Marine model
- Data-Link group - SRM6310E
- USB 2
- LAN RJ45
- Input: 230VAC and 24VDC

OSIS International
 Tirsbækvej 131 · DK-7120 Vejle Ø
 E-mail: mail@osis.biz · www.osis.biz
 CVR nr.: 26 04 36 97





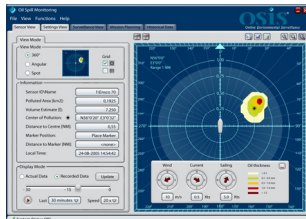
Screens

Start-up View:



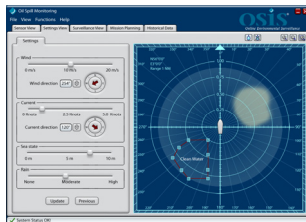
Start-up View enables the user to select one of the installed and connected SensorPacks. If applicable, the user can work offline and access historical data without being connected to a SensorPack.

Sensor View:



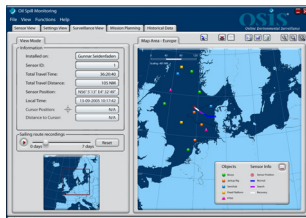
Sensor View provides real time information in the sensor modes selected on the screen. The contaminated area and volume is displayed with other essential information. The latest hour of recordings is stored automatically and can be replayed upon request.

Settings View:



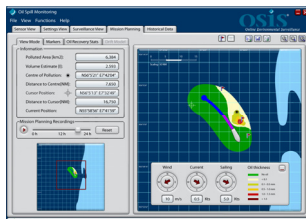
Settings View is used to define a number of essential parameters for oil spill calculation such as "clean water", wind, current and rain. The system automatically reminds the user if and when new settings are required.

Surveillance View:



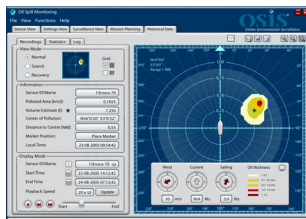
Surveillance View illustrates the geographical area defined by the user. Information about offshore structures, marker buoys etc. can be visualized. Current and historical position of the SensorPack is illustrated together with the operational mode. (Module 2 feature)

Mission Planning:



Mission Planning enables users to accumulate data over a longer period of time for damage assessment and operational planning during cleanup operations. Swept area, polluted area and oil spill thickness is displayed. (Module 2 feature)

Historical Data:



Historical data enables users to playback data more than 1 hour old. This feature requires a Master Unit to be installed including Oil Spill Detection (OSD) module. (Module 2 feature)

