



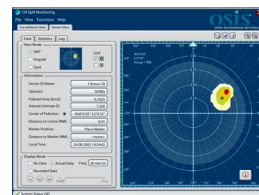
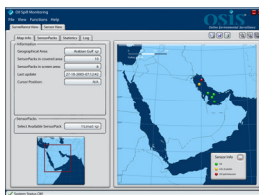
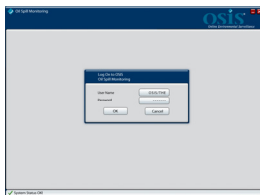
DataSheet – OSIS Onshore Data Viewer

OSIS Onshore Data Viewer - informing decision makers

The **OSIS Onshore Data Viewer** is a client based installation providing access to the Central Server for oil spill information from offshore SensorPacks. The Onshore Viewer is linked to the Central Server via the internet and users are automatically updated with sensor status for all sensors within designated geographic areas. The information can be displayed on a standard PC and/or a wall mounted monitor.

Architecture

The Onshore Viewer enables the user to monitor a large geographical area for oil spills from a central onshore location where playbacks of oil spill information are displayed. The viewer function is specifically designed to meet requirements from operators HSE headquarters and environmental authorities.



Features

- Client installation with remote access to the Central Server
- Central oil spill monitoring of selected areas
- Automated update of status for connected SensorPacks
- Automatic alarm to selected recipients in case of an oil spill
- Displays oil spill area, thickness and volume estimate
- Identification of polluting source
- Data storage and statistics
- Encrypted communication
- Standard delivery includes 1 workstation, 1 42" Plasma screen and 10 user licenses.

Hardware

- Intel Pentium 4 3.0Ghz 2MB L2 cache 800Mhz FSB
- Intel 945 G chipset
- 1GB of DDR2 RAM Kingston Value RAM
- ATI Radeon X1800 graphic card 256MB RAM (DX9)
- Hitachi 200GB disk
- Optical drive (DVD)
- 20" TFT Screen, 1600 x 1200 pixels
- 42" Plasma Screen, 1024 x 768 pixels
- Standard PC Configuration with Microsoft Win XP Pro

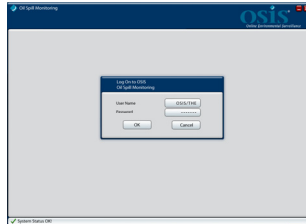




DataSheet – OSIS Onshore Data Viewer

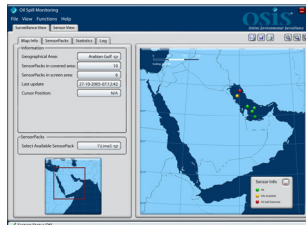
Onshore Viewer screens

Login View:

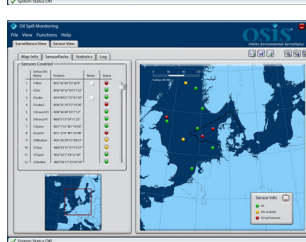


Login View provides access to the OSIS Central Server using username and password provided by the system administrator.

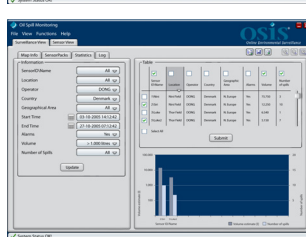
Surveillance View:



Surveillance View displays status from all SensorPacks within a selected graphical area. The SensorPack status is indicated by green, yellow and red icons. Red indicates that an oil spill is observed and green serves as verification of system performance.

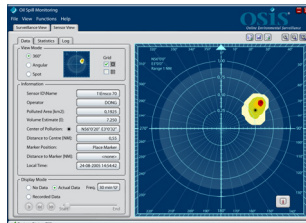


Surveillance View contains a list of SensorPacks in the area, providing access to sensor status. Any geographic area can be selected, including the Arabian Gulf and Northern Europe.

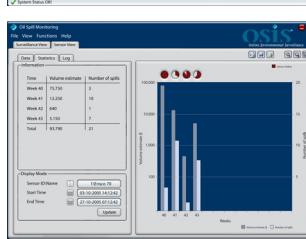


Surveillance View provides extensive statistics and log functionality for all SensorPacks within the selected geographical area. Reports can be generated and sent by any means for documentation purposes.

Sensor View:



Sensor View enables onshore users to access the individual sensors within the selected geographical area in order to monitor, track and quantify oil spills.



Sensor View provides extensive statistics and log functionality for individual SensorPacks located within the selected geographical area. Reports can be generated and sent by any means for documentation purposes.

